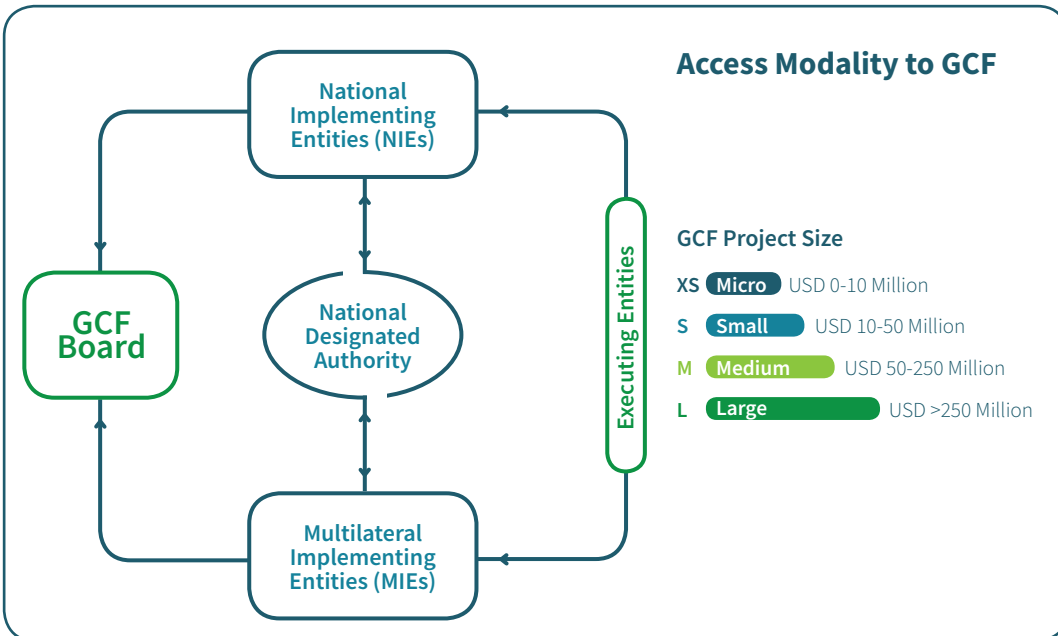
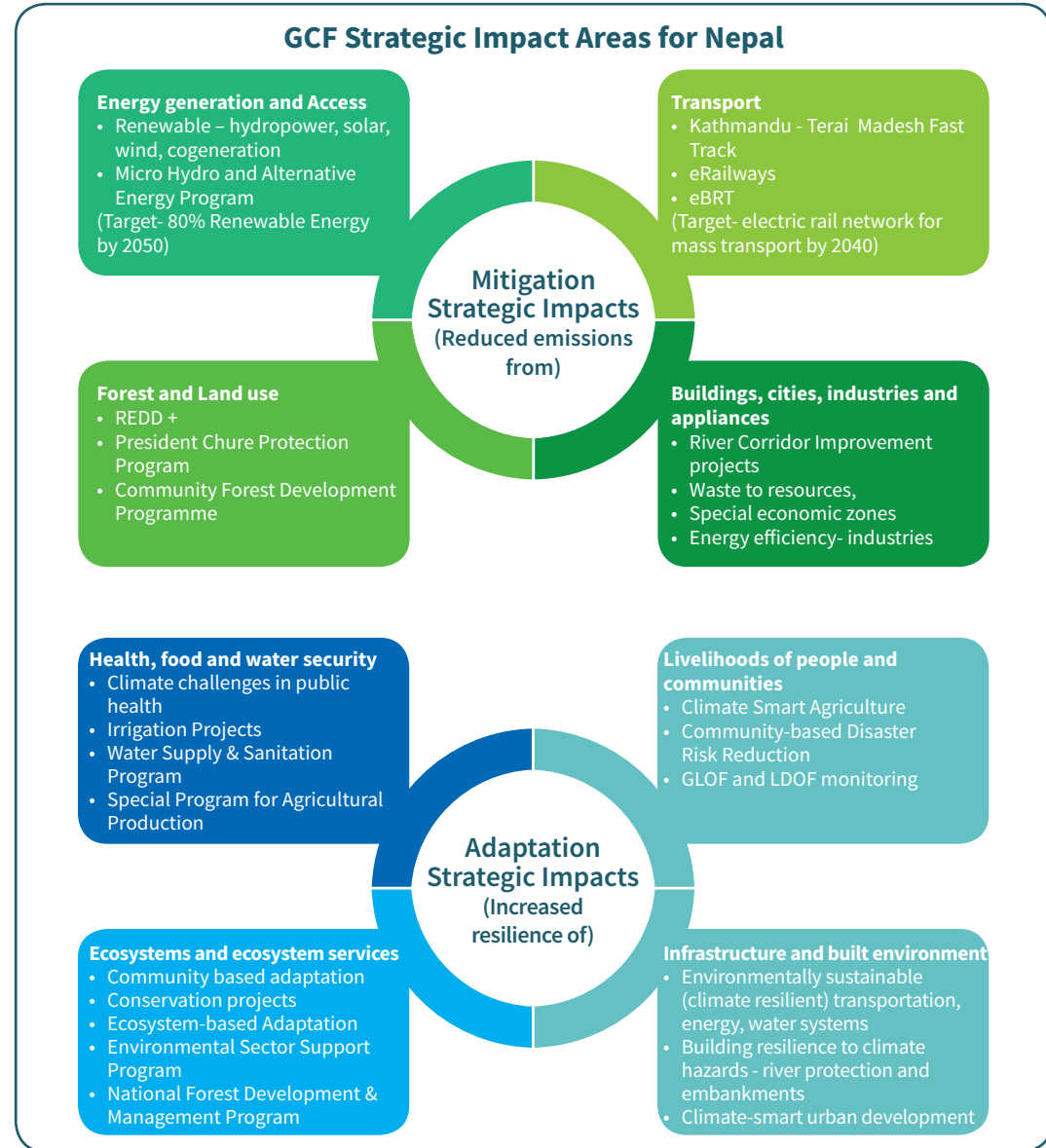
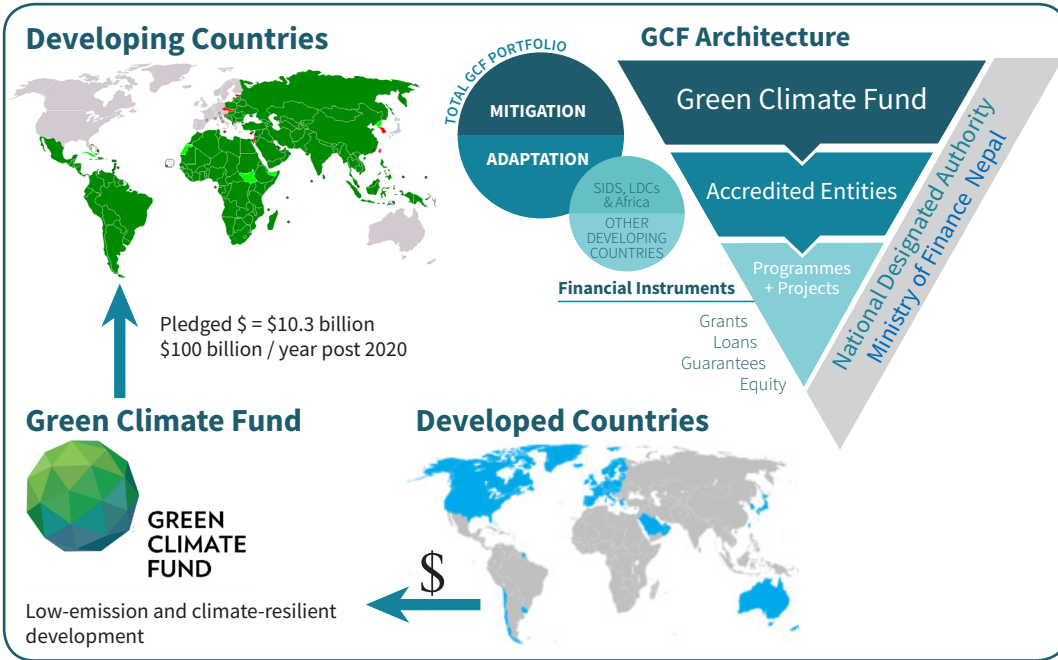




Access to Green Climate Fund (GCF)



Nepal Development Research Institute
Shree Durbar Tole, Pulchowk, Lalitpur
GPO Box: 8975, EPC 2201, Kathmandu, Nepal
Telephone : +977-1-5537362, 5554975
Email : info@ndri.org.np
Web :http://www.ndri.org.np



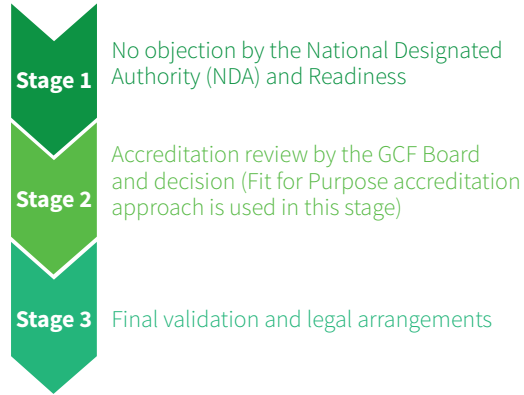
Prakriti Resources Centre



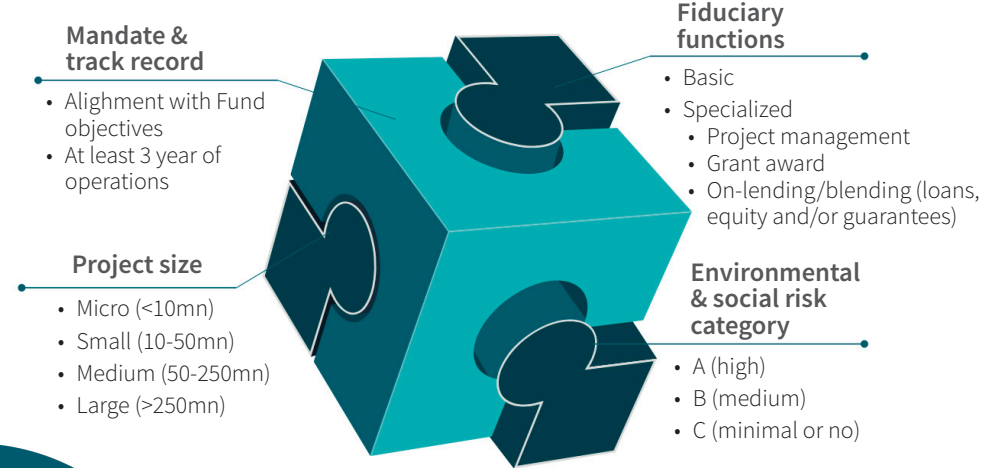
Climate & Development Knowledge Network

Accreditation of National Implementing Entities (NIEs) to GCF





Accreditation Process



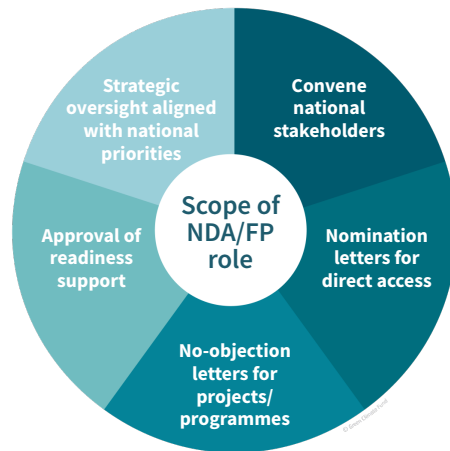
Fit for purpose approach to accreditation



Accreditation requirements

Fiduciary standards			
Basic	Specialized		
<ul style="list-style-type: none"> • Proper accounting of finance • Transparency • Accountability 	<ul style="list-style-type: none"> • Project Management • Grant award mechanism • On-lending / blending 		
Environment and social safeguards (ESS) standards			
Level of ESS Risk	High	Medium	Low
			
Gender policy			

National Designated Authority for Nepal Ministry of Finance



Criteria for selection of potential NIEs

Institutional Mandate	<ul style="list-style-type: none"> • Past experiences on strategic areas • Organization setup
Preparedness	<ul style="list-style-type: none"> • Fiduciary standards (basic + specialized) • Environmental and social safeguards • Gender policy
Experience	<ul style="list-style-type: none"> • Implementation of donor funded projects (compliance with fiduciary standards, ESS and gender policy of development partners)
Others	<ul style="list-style-type: none"> • Potential to generate co-benefits • Diversity of potential institutions

Potential National Implementing Entities

Ministries and Departments



Sub-national, Local bodies

Metropolitan City
Sub-Metropolitan City
Municipality Council
Village Council



Public Sector Institutions



Private Sector Institutions



Government of Nepal
PRESIDENT CHURE-TARAI MADHESH CONSERVATION DEVELOPMENT BOARD

Nepal Development Research Institute
Shree Durbar Tole, Pulchowk, Lalitpur
GPO Box: 8975, EPC 2201, Kathmandu, Nepal
Telephone : +977-1-5537362, 5554975
Email : info@ndri.org.np
Web : http://www.ndri.org.np

